

# Trail Road Battery Energy Storage System Project

Ontario is predicting an electricity shortfall during peak hours as early as 2025 and the government is requesting proposals for new projects to prevent blackouts. The Trail Road BESS Project directly responds to this call.

The proposed Project is expected to be operational by **May 2028**, subject to the IESO determining the project to be best for Ontario ratepayers. For renewable projects of this nature and size, we can presume:

- ✔ Minimal noise impact
- ✔ Minimal traffic when facility is operational
- ✔ Increased electricity supply and reliability
- ✔ Reduced chance for outages in the network

Projects must obtain all relevant permitting licenses and conduct mandatory environmental assessments to ensure compliance with current regulatory framework





# Trail Road Battery Energy Storage System Project

The Project is in the feasibility stage and would consist of installing battery modules, additional power equipment, light civil, safety, and security infrastructure.

## Project Overview

- ✔ Located on ~8 acres of a 53-acre site on private land in Ottawa, ON
- ✔ Adds up to 150 MW of capacity and 600 MWh of energy storage, which can be deployed as required
- ✔ Annual local community contribution of \$150K
- ✔ Interconnects to IESO using 230 kV circuit





# Trail Road BESS Project Highlights



Project adds **renewable capacity and storage** to meet Ontario's rising energy demands, especially during peak-periods, reducing the chance for power outages.



Project is in the **feasibility stage**; subject to the IESO determining the Project to be best for Ontario ratepayers.



Project represents a **local innovative low-carbon solution**, and **supports sustainability efforts** by reducing reliance on higher carbon intensive facilities.



**Community benefit fund** will be established to ensure contributions from the project into the local community, in addition to property taxes to the City of Ottawa.





**PROPOSED PROJECT**

- Project area
- Battery containers and substation
- Interconnection line (option 1)
- Connection point
- Transmission Lines

PRELIMINARY DESIGN - SUBJECT TO CHANGE. INTERCONNECTION LINE OPTIONS IN STUDY.

For any questions or comments, contact us by email at [info@evolugen.com](mailto:info@evolugen.com).

**1-888-327-2722**  
**[evolugen.com/trail](http://evolugen.com/trail)**



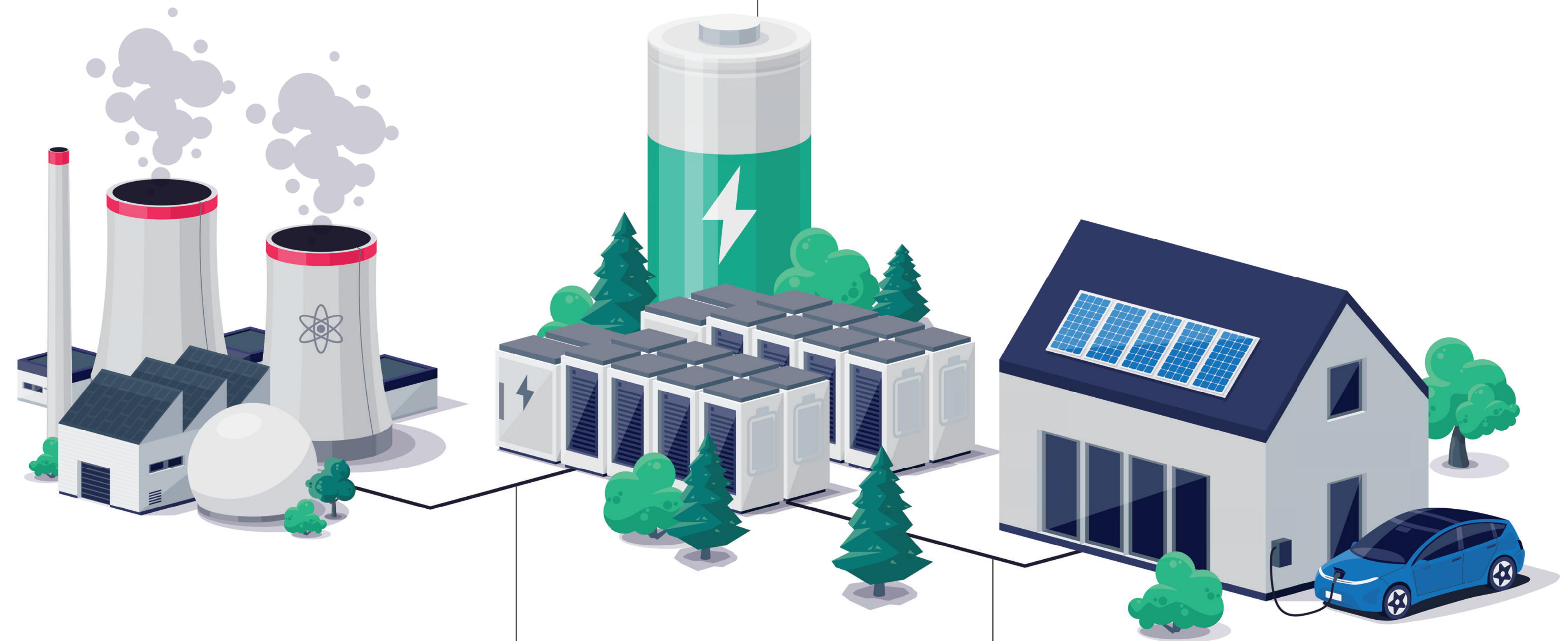
# Project Timeline and Next Steps





## How BESS Projects Work

Energy storage will add grid capacity, enhance flexible grid operations and save greenhouse gas (GHG) emissions in Ontario by reducing the need for carbon-intensive power plants during times of peak demand.



### Battery

Energy is stored in the batteries for later consumption and until needed by the grid.

### Charge +

Batteries charge during non-peak times, when energy sources such as hydro or nuclear generate excess electricity. The energy is used to 'charge' the batteries.

### Discharge -

Energy is typically released during peak hours to provide stability and flexibility. Energy can also be released during emergencies to stabilize the grid.



# Safety & Fire Mitigation

Our safety culture is exemplified by more than two decades of experience and our track record of zero employee or contractor fatalities.

## Core elements of our fire safety approach



### Prevent

- Technology Selection
- Safety Certification
- Installation Codes
- Testing for Performance



### Monitor

- Battery Management System (BMS) to monitor temperature, voltage, and more
- 24/7 staffed monitoring facility, located in our Gatineau office
- Maintenance program to ensure adequate BESS health



### Respond

- Fire response training and coordination
- Water is the preferred suppressant for firefighting
- Work with local first responders to ensure safe and effective response in case of an emergency



# Community Benefit Fund

**We strongly believe in being an active partner in the Ottawa region.**

- Trail Road BESS will establish a **community benefit fund of \$150,000 annually**, aimed at supporting local organizations that contribute to the well-being of the community.
- As part of our culture, we support local programs, initiatives and organizations, including the Ottawa Food Bank, the CHEO Foundation, Dress for Success Ottawa, Ottawa Riverkeeper and more.
- We would seek community feedback on how to establish and administer the fund to ensure there is local input on what organizations and projects are being chosen and supported.

